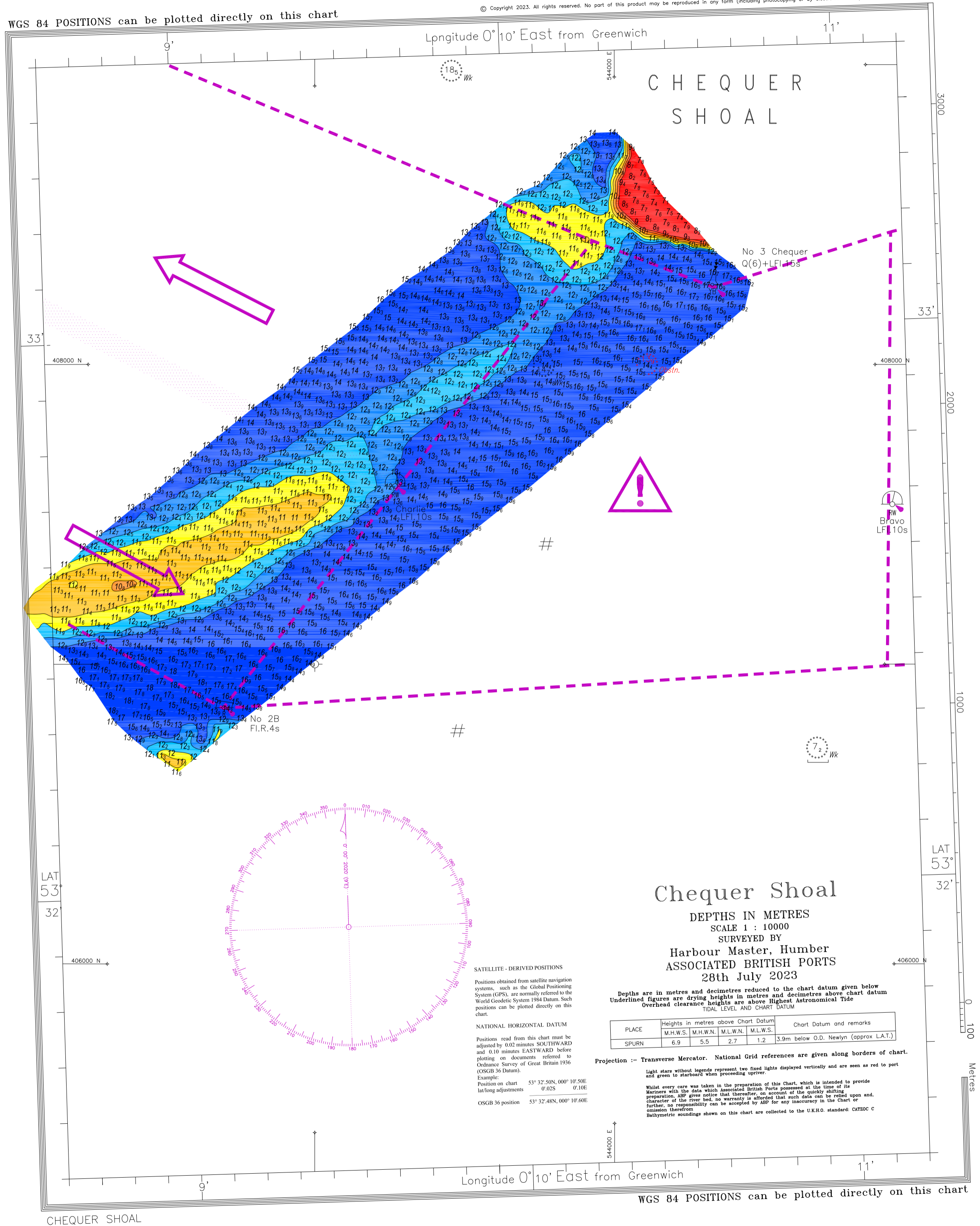


WGS 84 POSITIONS can be plotted directly on this chart

© Copyright 2023. All rights reserved. No part of this product may be reproduced in any form (including photocopying or by electronic means) without prior permission.



Chequer Shoal

DEPTHS IN METRES
 SCALE 1 : 10000
 SURVEYED BY
 Harbour Master, Humber
 ASSOCIATED BRITISH PORTS
 28th July 2023

Depths are in metres and decimetres reduced to the chart datum given below
 Underlined figures are drying heights in metres and decimetres above chart datum
 Overhead clearance heights are above Highest Astronomical Tide

PLACE	Heights in metres above Chart Datum			Chart Datum and remarks
	M.H.W.S.	M.H.W.N.	M.L.W.S.	
SPURN	6.9	5.5	2.7	3.9m below O.D. Newlyn (approx L.A.T.)

SATELLITE - DERIVED POSITIONS
 Positions obtained from satellite navigation systems, such as the Global Positioning System (GPS), are normally referred to the World Geodetic System 1984 Datum. Such positions can be plotted directly on this chart.

NATIONAL HORIZONTAL DATUM
 Positions read from this chart must be adjusted by 0.02 minutes SOUTHWARD and 0.10 minutes EASTWARD before plotting on documents referred to Ordnance Survey of Great Britain 1936 (OSGB 36 Datum).
 Example:
 Position on chart 53° 32'.50N, 000° 10'.50E
 lat/long adjustments 0.02S 0.10E
 OSGB 36 position 53° 32'.48N, 000° 10'.60E

Projection :- Transverse Mercator. National Grid references are given along borders of chart.

Light stars without legends represent two fixed lights displayed vertically and are seen as red to port and green to starboard when proceeding upriver.

Whilst every care was taken in the preparation of this Chart, which is intended to provide Mariners with the data which Associated British Ports possessed at the time of its preparation, ABP gives notice that thereafter, on account of the quickly shifting character of the river bed, no warranty is afforded that such data can be relied upon and further, no responsibility can be accepted by ABP for any inaccuracy in the Chart or omission therefrom.

Bathymetric soundings shown on this chart are collected to the U.K.H.O. standard: CATZOC C

CHEQUER SHOAL

WGS 84 POSITIONS can be plotted directly on this chart